

RC-P Remote Control User Guide

www.sonici.com

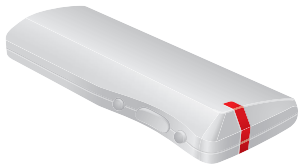


Table of Contents

Introduction	6
Features	7
Battery Insertion and Replacement	8
Operating your Hearing Aids with the Remote Control ...	10
Operating Distance	11
Lock Switch	12
Volume Control	13
Program Cycle Button	14
Mute Button	15

Status Light	16
Lanyard Ring	18
Protection Sleeve	19
Care of Your Remote Control	20
Environmental Protection	21
Warnings and Safety Guidelines	22
Warranty	25
Declarations of Conformity	27

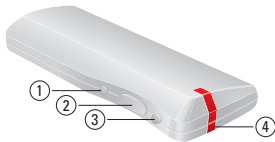
Introduction



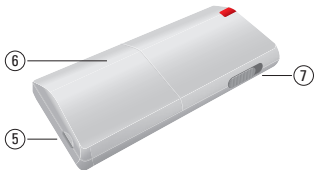
Remote Control (RC- P)

This booklet describes how to get the most from your new remote control. Please follow these instructions for care and use.

Features



- 1 Program cycle button
- 2 Volume control
- 3 Mute button
- 4 Status light



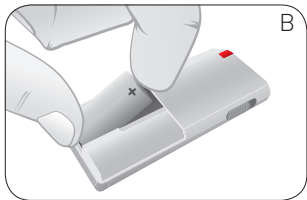
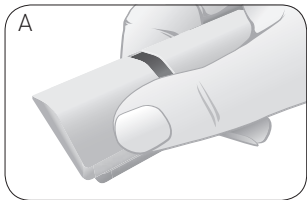
- 5 Lanyard ring
- 6 Battery cover
- 7 Lock switch

Battery Insertion and Replacement

The remote control uses a CR2 type battery.

To insert a new battery:

- Gently slide the battery cover off. (A)
- Make sure that the “+” sign on the battery matches with the “+” sign in the battery compartment.



- Place the battery in the compartment making sure that the battery is properly positioned at both ends. (B)
- Replace the battery cover, then slide it closed.

Please note:

- The battery cover should never be forced. If force is required to close the cover, check the alignment and reposition it so that it slides easily into place.
- Battery life will vary depending on conditions of use.

Operating your Hearing Aids with the Remote Control

Your hearing aids can be operated by using the buttons on your remote control. If you have hearing aids fitted to both ears, the remote control will adjust both at the same time.

Operating Distance

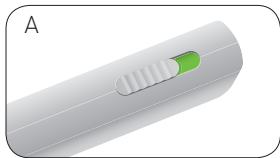
With the remote control, you can operate your hearing aids from a distance of up to 3 feet / 1 meter.

A direct line of sight between the remote control and your hearing aids is not required.

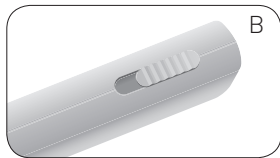
Lock Switch

Your remote control is equipped with a lock switch to prevent accidental operation.

- Position the switch to “unlock” with the green dot visible.
Your remote control is ready for use. (A)
- Position the switch to “lock” with the green dot hidden.
Your remote control buttons are deactivated. (B)



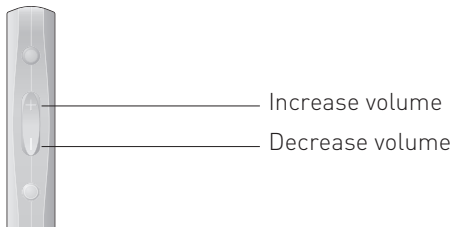
Unlocked = Green dot visible



Locked = Green dot hidden

Volume Control

The volume of your hearing aids may be adjusted by using the volume control.



Press “+” to increase volume (louder)

Press “-” to decrease volume (softer)

Program Cycle Button

To cycle through the hearing aid programs with the remote control, press the bottom button. Each push will advance the hearing aids to the next program in the cycle.



Mute Button

The remote control is equipped with a mute button. By pressing this button, the remote control directs the hearing aids to a mute mode.




Mute Button

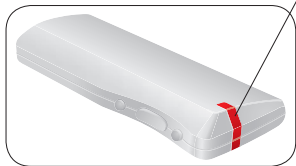
Press the top button to access the mute function.
To unmute the hearing aids with the remote control press any button.

Status Light

The status light indicates the remote control operation. It will blink after each button press. Two possibilities will be seen.

 blinking indicates that the remote control is locked. To unlock, position the lock switch so that the green dot is visible.

Green indicates that the remote control is unlocked and has sent a command to your hearing aids.

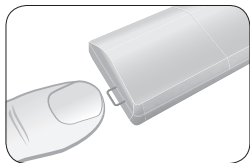


Status light

If the light does not blink after a button is pressed, the battery needs to be replaced.

Lanyard Ring

For your convenience, it is possible to attach the remote control to a lanyard. In order to mount the lanyard, pull out the ring which is found near the battery compartment. Thread the cord through the ring to attach it to your remote control.



Protection Sleeve

You can protect your remote control from scratches by using the supplied protection sleeve.

Insertion:

Gently push the remote control into the protection sleeve opening.

Removal:

Press with your thumb on the material directly opposite to the protection sleeve opening to expose the end of your remote control, then gently pull it out.

Care of Your Remote Control

- When changing the battery or cleaning the remote control, hold it over a soft surface to avoid damage if it is accidentally dropped.
- Clean the remote control regularly with a dry cloth or tissue.
- Avoid getting the remote control wet.
- Never attempt to dry the remote control with a hair dryer, in a microwave oven or with any other heating device.
- The remote control should never be exposed to extreme heat, such as on the dashboard or in the glove box of your car.

Environmental Protection

Help to protect the environment by not disposing of your remote control or batteries with your unsorted household waste. Please recycle your remote control and batteries or return them to your hearing care provider for disposal. Contact your hearing care provider for more information.



Warnings and Safety Guidelines

- You should familiarize yourself completely with this booklet before using your remote control.
- The remote control should not be used in an aircraft.
- An empty battery should be removed as soon as possible.
- Used batteries should be returned to your battery supplier or hearing care provider.
- Never dispose of batteries by burning them.
There is a risk that they may explode and cause injury.
- Never dispose of batteries with household waste.
They can cause environmental pollution.

- Never try to recharge non-rechargeable batteries.
- Keep new and used batteries away from young children or persons of mental incapacity. If swallowed, seek immediate medical advice.
- The remote control is not approved to be operated in explosive environments. Do not use it in mines or other environments with explosive hazards.
- The remote control uses digital inductive signals to transmit commands to the hearing aids. Although extremely unlikely, concerns have been raised that this

signal could possibly interfere with medical devices such as pacemakers.

- As an additional precaution, we advise pacemaker recipients not to carry and use the remote control in a breast pocket or around the neck.
- Attention! The remote control is not a toy and should under no circumstances be passed on to infants or small children (under 36 months).
- For security reasons the lanyard ends should never be tied together. Use the fastener provided.

Warranty

The RC-P remote control is covered by a limited warranty, covering defects in materials and workmanship. This warranty covers the remote control itself, but not accessories such as batteries.

This warranty becomes invalid if a defect is a result of misuse or maltreatment.

This warranty is void if non-authorized personnel have repaired the remote control. Please review the warranty card with your hearing care provider and make sure that your warranty card is completed correctly.

Declarations of Conformity

Hereby, Bernafon AG, declares that the RC-P remote control is in compliance with the essential requirements and other relevant provisions of Directive 1999/5/EC and Directive 93/42/EEC. A copy of the declaration of conformity can be obtained at the following address:

Bernafon AG
Morgenstrasse 131
3018 Bern
Switzerland

This device and its radio communication parts are approved for use in the following countries:

All member states of the EU and EFTA and AU, CA, JP, NZ and US.



FCC ID: U6XRCP
IC: 7031A-RCP



N14144

This device complies with Part 15 of the FCC Rules and with RSS-210 of Industry Canada. Operation is subject to the following two conditions:

(1) this device may not cause harmful interference, and (2) this device must accept any interference received, including interference that may cause undesired operation. Changes or modifications not expressly approved by the party responsible for compliance could void the user's authority to operate the equipment.

NOTE: This equipment has been tested and found to comply with the limits for a Class B digital device, pursuant to Part 15 of the FCC Rules.

These limits are designed to provide reasonable protection against harmful interference in a residential installation. This equipment generates, uses and can radiate radio frequency energy and, if not installed and used in accordance with the instructions, may cause harmful interference to radio communications. However, there is no guarantee that interference will not occur in a particular installation.

If this equipment does cause harmful interference to radio or television reception, which can be determined by turning the equipment off and on, the user is encouraged to try to correct the interference by one or more of the following measures:

- Reorient or relocate the receiving antenna.
- Increase the separation between the equipment and receiver.
- Connect the equipment into an outlet on a circuit different from that to which the receiver is connected.

- Consult the dealer or an experienced radio/TV technician for help.

This Class B digital apparatus complies with Canadian ICES-003.

This device emits according to following standard:
ETSI EN 300 330 – 1 V1.5.1

Distributed by:

Sonic Innovations, Inc.

4246 South Riverboat Road, #300

Salt Lake City, Utah 84123

United States of America

(888) 423-7834



www.sonici.com

© 2010 Sonic Innovations, Inc. All rights reserved.

subject to change

4001550.A