

TV Adapter Installation Guide

www.sonici.com

The logo for SONIC innovations features a stylized graphic of three curved lines on the left, resembling a speaker or sound waves, followed by the word "SONIC" in a bold, sans-serif font and "innovations" in a smaller, lowercase sans-serif font below it.

SONIC
innovations

Table of Contents

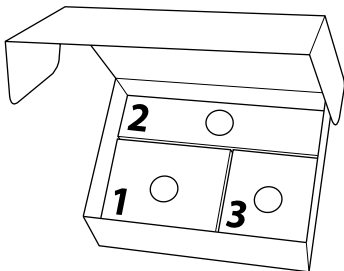
Introduction	4
TV Adapter Overview	5
Connecting to Power	6
Connecting to a TV	7
Optional Adapters for Connecting to a TV	8
Prepare SoundGate for TV Listening	10
Using the SoundGate and Support	11
Product Approval, Precautions and Markings	12
Warranty	14
Warnings	15

Introduction

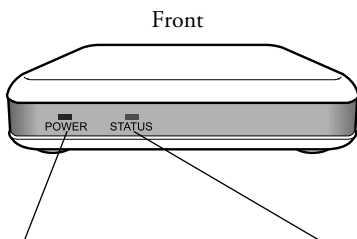
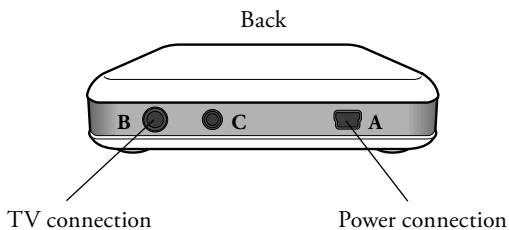
This user guide explains how to install the TV adapter for use with the SoundGate. For instructions on how to use your TV adapter, please consult the TV Adapter User Guide.

Before your Bluetooth® enabled instruments can receive sound from the TV, the TV adapter must be connected to the TV and a power outlet.

All needed parts for the installation are included in three numbered boxes.



TV Adapter Overview



Power indicator

Light	Meaning
Solid	Power on
Off	Power off

Status indicator

Light	Meaning
Solid	Connected to SoundGate and streaming TV sound
Off	Stand-by
Flashing	Pairing

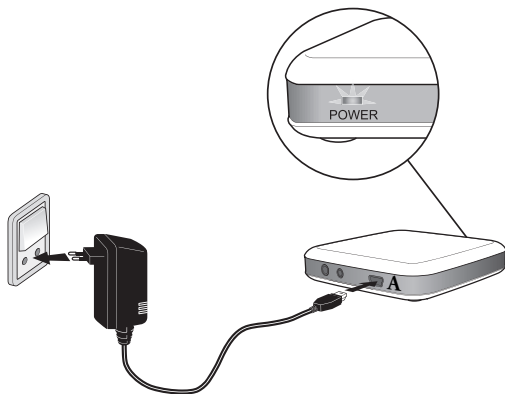
○	
1	○

Connecting to Power

Begin the installation by connecting power to the TV adapter.

Use the power adapter from box no. 1.

- Plug the power adapter into the wall socket or another power source.
- Plug the power cord into the power connection marked A.
- Check that the power is turned on and there is a solid green light in the power indicator on the front of the TV adapter.





Connecting to a TV

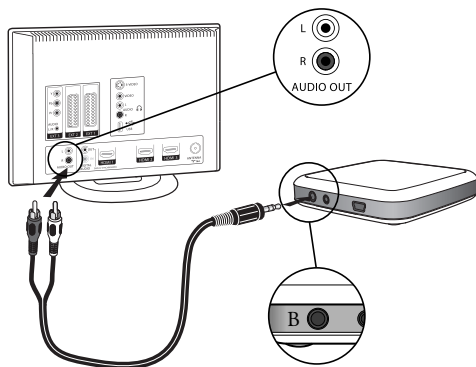
Connect the TV to the TV adapter.

Use the TV cord from box no. 2.

- Connect the black plug on the TV cord to the connector marked **B**.
- Connect the red and white connectors to the “AUDIO OUT” terminals on the TV (typically marked “L – R” “AUDIO OUT” and found on the TV back or bottom panel).

If the TV has no “L – R” RCA Phono “OUTPUT”, an adapter should be used for connecting the TV cord. Then proceed to step 3.

The installation is now complete and can be checked by using your SoundGate (refer to the user guide).





Optional Adapters for Connecting to a TV

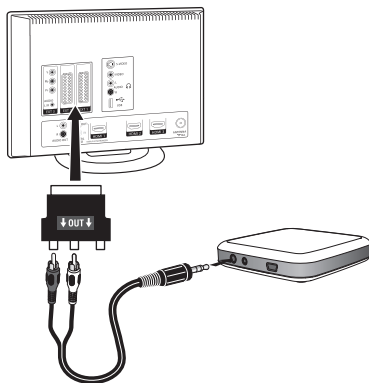
Option 1: SCART connection

If an adapter must be used for connecting the TV cord to the TV set, this is found in box no. 3. If the installation was completed in step 2, box no. 3 should not be used!

SCART connection using the SCART adapter.

- Connect the audio cord to the red and white terminals on the SCART adapter and plug it into the TV's SCART connection.

If you have a DVD or a sat box connected to the SCART, you should use option 2 instead.





Optional Adapters for Connecting to a TV

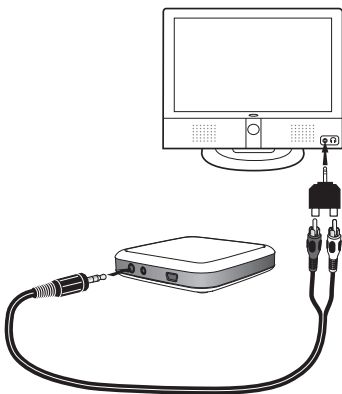
Option 2: Head phone connection

Head phone connection using the jack adapter.

- Connect the TV cord to the jack adapter and plug it into the TV's head phone output.

The head phone output may be found on the side or front of the TV.

Note that the TV sound over the speaker may turn off while the jack adapter is plugged in.



Prepare SoundGate for TV Listening

The very first time your SoundGate is used with the TV adapter, the two devices must be paired together.

Pairing

1. In order to pair the TV adapter and the SoundGate, the devices must be placed close together. Place the SoundGate right next to the TV adapter (less than 1 ft / 30 cm between devices).
2. Press the SoundGate Bluetooth® key for 5 seconds until the blue light starts flashing rapidly.
3. The two devices are now establishing a connection with each other. Wait one minute.
4. After one minute the TV adapter connects to the SoundGate and the pairing is complete. The orange STATUS indicator on the TV adapter will show a solid light.



Status

Pairing should be completed only once and will normally not have to be repeated.

Using the SoundGate and Support

Place the TV adapter in a suitable spot close to the TV. To use the SoundGate with the TV adapter, refer to the TV Adapter User Guide.

Turn off the TV adapter

The TV adapter uses very little power so it is not necessary to turn it off.

TV sound range

The TV adapter has a range of about 30 feet / 10 meters, depending on room furniture and placement.

Connection with SCART adapter

If you connect the TV adapter with the SCART adapter you will only hear audio from the TV tuner with the TV adapter. Audio from other sources such as DVD or VCR will not be played. This is a limitation of the SCART connector.

Product Approval, Precautions and markings

The emission power from the TV adapter is below international emission limits for human exposure.

This device complies with Part 15 of the FCC Rules.

Operation is subject to the following two conditions: (1) this device may not cause harmful interference, and (2) this device must accept any interference, including interference that may cause undesired operation of the device.

Changes or modifications not expressly approved by the party responsible for compliance could void the user's authority to operate the equipment.

To comply with FCC RF exposure requirements, the device and the antenna for this device must be installed to ensure a minimum separation distance of 20 cm or more from a person's body. Other operating configurations should be avoided.

NOTE: This equipment has been tested and found to comply with the limits for a Class B digital device, pursuant to Part 15 of the FCC Rules. These limits are designed to provide reasonable protection against harmful interference in a residential installation. This equipment generates, uses and can radiate radio frequency energy and, if not installed and used in accordance with the instructions, may cause harmful interference to

radio communications. However, there is no guarantee that interference will not occur in a particular installation.

If this equipment does cause harmful interference to radio or television reception, which can be determined by turning the equipment off and on, the user is encouraged to try to correct the interference by one or more of the following measures:

- Reorient or relocate the receiving antenna.
- Increase the separation between the equipment and receiver.
- Connect the equipment into an outlet on a circuit different from that to which the receiver is connected.
- Consult the dealer or an experienced radio/TV technician for help.

This TV adapter is in compliance with the essential requirements and other relevant provisions of Directive 1999/5/EC.

Declaration of conformity is available at:
Bernafon AG
Morgenstrasse 131
3018 Bern
Switzerland
www.bernafon.com

CE 0678



Only use the power adapter that was originally supplied with your TV adapter.

Warranty

The TV adapter has a limited warranty, covering defects in materials and workmanship. This warranty covers the TV adapter itself, but not accessories such as charger units, cables, etc. This warranty becomes invalid if a defect is a result of misuse or maltreatment.

This warranty is void if non-authorized personnel have repaired the TV adapter. Please review the warranty card with your hearing care professional and make sure that your warranty card is completed.

The above warranty does not affect any legal rights that you might have under applicable national legislation governing sale of consumer products. Your hearing care professional may have issued a warranty that goes beyond the clauses of this limited warranty. Please consult your hearing care provider for further information.

Warnings

The TV adapter is not a toy and therefore should be kept out of the reach of children and anyone else who might swallow parts or otherwise cause injury to themselves. Special attention should be paid to the smaller components in order to prevent children from swallowing them and choking.

If a part is swallowed, see a doctor immediately.

The safety of the use of the TV adapter with an auxiliary input cable is determined by external signal source. When the input cable is connected to mains operated equipment, this equipment must comply with IEC-60065, IEC-60601 or equivalent safety standards.

The TV adapter is designed to comply with the most stringent Standards of International Electromagnetic Compatibility. However, the TV adapter might cause interference with other medical devices. Please contact relevant personnel to obtain permission before using the TV adapter in hospitals or similar venues.

The TV adapter must never be washed or immersed in water or other liquids.

Distributed by:
Sonic Innovations, Inc.
4246 South Riverboat Road, #300
Salt Lake City, Utah 84123
United States of America
(888) 423-7834



www.sonici.com

© 2010 Sonic Innovations, Inc. All rights reserved.

Bluetooth is a registered trademark owned by

Bluetooth SIG, Inc., USA.

subject to change

4001552.A